

# Primary Matters

News and Information from Primary Phase - Monday 8th February 2021

## Vice Principal's Message

We are fast approaching the end of term 3 and throughout our differing experiences of lockdown, one thing that we can perhaps agree on, is that this lockdown is proving to be a really tough time for everyone! As we know, the government has announced that 8th March will be the earliest date that schools may be able to open, and so our remote learning and critical worker/vulnerable children's provision will continue, after the half term holiday break.

We are, of course, looking forward to welcoming all our children back to school as soon as it is safe to do so. In the meantime, I would like to thank parents and families who are trying their best to support the remote learning provision, our primary students for their hard work and enthusiasm in adapting to working at home and our school staff for their commitment to providing the best possible opportunities for our children in school and at home. We would also like to thank our parent community for their donations of laptops and the means to provide more devices for our children. Finally, we extend our gratitude to critical worker parents and those on the front line of service during the pandemic.

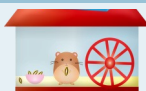
Throughout these difficult times, our children are developing a new understanding of different technologies, learning to work in a different way and starting to build independence in their school work. Learning to adapt and cope with change helps children to develop resilience; a skill which will serve them well throughout their life. Thank you once again for your patience, understanding and support. Together we will get through this difficult period and emerge in better times, a stronger school community, as a result of our shared experiences.



### In this newsletter...

- Vice Principal's Message
- CCS Friends
- Onsite Critical Worker Provision
- Spotlight on Learning- KS1
- Applying for a Device
- Wellbeing Wednesday
- Dates for your Diary
- Remote Learning - MS Teams Update
- Tech Tip!
- Primary Remote Learning Survey
- Important Teams Rules
- Changing Circumstances
- Communication from School
- In School- PE Days

### CCS Friends



#### CCS Friends have launched their own virtual pet show!

You can visit their website up until Sunday 14th February to purchase a ticket to enter, then upload a picture of your pet to the [CCS Friends page](#). The CCS Friends Committee will vote for their favourites! You can also enter if you don't have a pet - send in a drawing or a poem of what your "ideal pet" looks like or means to you.

Winners will receive a small gift for either their pet or themselves. CCS Friends would love to feature the winners on their social media pages so please do tell them if you would prefer they didn't feature your photo, by sending an email directly to CCS Friends at [ccsfriends@protonmail.com](mailto:ccsfriends@protonmail.com).

## Onsite Critical Worker Provision



As you are aware, schools remain open for children of parents who are critical workers and vulnerable children. Our remote learning provision, including live meetings and lessons, is fully up and running and children who attend our in-school provision follow the remote learning timetable that teachers are providing for our children who are at home.

During this lockdown, we have seen a much higher attendance at our critical worker / vulnerable children provision resulting in larger year group bubbles. In fact, in most year groups, we are now either at capacity or near capacity,

In order to limit numbers in school, the government has updated the guidance on critical / key workers to say that "Children with at least one parent or carer who is a critical worker can go to school or college if required, but parents and carers should keep their children at home if they can." We are working hard to keep everyone who needs to attend the school site, as safe as possible but this obviously becomes more difficult as more children attend.

Therefore, if you are working part-time or if you are a critical worker parent remaining at home and can find ways to support your child's remote learning, please consider only sending your child to school when absolutely necessary. We understand that it's difficult to work from home and supervise your child's learning and we really appreciate the efforts that many parents are making to follow this guidance, which helps to minimise numbers on site as much as possible.

Thank you for your support as it really does help to keep everyone as safe as possible and within our existing staff capacity.



## Spotlight on Learning - KS1

Our Key Stage 1 children are continuing to impress us with how well they are coping with learning at home and the changes within school. They have been getting to grips with using technology from home, including using SWAYS and MS Teams. It is a delight to see their faces on screen during our morning and afternoon live sessions as well as seeing how hard they are working via their submitted activities.

Within Year 1, the learning theme for this term is 'Once Upon a Time'. The theme focuses around traditional tales where the children study a range of stories with the help of the Gingerbread man. Each week they receive an email with instructions from the Gingerbread man, detailing the story for the week and the activities he would like them to complete. It started out with learning about his story and decorating their very own gingerbread men in school. So far, the children have immersed themselves in the stories about Little Red Riding Hood and Billy Goats Gruff. We can't wait to see who the next character is!



Year 2 have taken a step back in time to learn all about the Tudors and have immersed themselves in the lives of Henry VIII and his wives. They have enjoyed reciting the wives through songs and rhymes as well as painting portraits. So far they have realised that Henry VIII was not a very pleasant man and that some very gory events took place in the Tudor times! Year 2 will be focusing on life in the Tudor period and comparing it to their lives now. This will include role play, music and food.

*Mrs Simmonds*

## Applying for a Device

We are very pleased to say that we have a number of devices available for children, from school, to assist students in their home learning. This might be helpful for those whose device is too old to run MS Teams, where there are not enough devices available in your home for all your children or where children are having to use a phone or a device that's too small to use Teams effectively.



There are a number of options available to you if you need a device. Details of these options and the form to register your interest can be found by clicking on the following link or by copying and pasting it into your web browser:

<https://forms.office.com/Pages/ResponsePage.aspx?id=-RwkYclZfkOajLIVMVszGXqGMkDq0-tAo6Q5nPFZqPxUQUptQVdCRFNES0VWMIZRVkJKWjZJOHhUy4u>

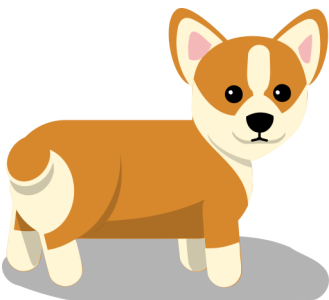
If you are interested, please do register your interest as soon as possible; we are processing requests as they come in. If you have any questions, please don't hesitate to contact Mrs Vikki Jewell on the email address [vjewell@ccs.northants.sch.uk](mailto:vjewell@ccs.northants.sch.uk).

## Wellbeing Wednesday

Wellbeing Wednesday is time focused on PHSE based themes and activities that support our physical and mental wellbeing; time to get away from the screen and do something different. We would love to see your photos of what your child is doing to relax and have fun during their weekly Wellbeing Wednesday time at home. Email them in to us at [primaryoffice@ccs.northants.sch.uk](mailto:primaryoffice@ccs.northants.sch.uk)

We love to show your photos so if you would like to give us permission to use your photo in one of our publications, you can state this on your email.

## Dates for your Diary



CCS Friends Virtual Pet Show Entries

CCS Friends Virtual Meeting

**School Closes**

**School Reopens**

Deadline for entering CCS Friends 100 club March draw

World Book Day

British Science Week

**Friday 29th January - Sunday 14th February**

**Monday 8th February**

**Friday 12th February**

**Monday 22nd February**

**Sunday 28th February**

**Thursday 4th March**

**Monday 8th - Friday 12th March**



*"I just wanted to pass on our thanks to Mrs Patterson and all the Primary Phase team for your hard work in keeping the children safe whilst at school and now in organising such excellent resources for home learning."*

## Remote Learning - MS Teams Update



The children in primary phase have now been using MS Teams for their remote learning for 3 weeks and we are so pleased with how well everybody has adapted to this new way of working.

The use of MS Teams for online learning is enabling us to provide live meetings and lessons on a daily basis and we are so impressed with how well our primary children are participating and very appreciative of parental support to achieve this.

We understand that it is not necessarily easy to master the technology. Please do not worry - sometimes it works and sometimes it just doesn't - we are all learning together! It is our intention that your child's timetable allows time to work away from the screen on independent learning activities. If your child is finding completing all their tasks on a particular day difficult, please focus on the English and maths live and recorded lessons.

### Primary Remote Learning Survey

We welcome your feedback on how our remote learning provision is working for you and your family. Please click on the link below to complete the survey:

[CCS Primary Remote Learning Feedback Survey](#)

### Tech Tip!



Did you know, if you have an iPhone or an iPad, you also own a scanner?

To use this handy feature:

- Open the 'Notes' app.
- Open a new note.
- Press the camera icon.
- Choose 'Scan Documents'.

Once the document is scanned, you can add notes to it or email it.

Handy for sending work to a teacher or submitting it on Teams!



## Important Teams Rules

Here is a quick reminder of some of the important rules for children to follow when using Teams:

- Join a meeting / lesson with your microphone and camera switched off.
- Use the chat / posts only for posting questions or comments to the teacher.
- Leave the meetings as soon as the teacher ends the lesson.
- GIFs and emojis are not allowed to be posted.
- Be kind and courteous to everyone.

Mr Sumner recorded a very helpful video that guides you through each of the main functions on Teams. To watch this video, click on the following link and use the login details shown below:

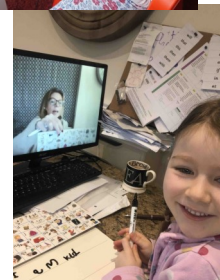
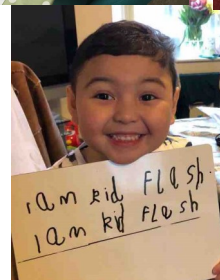
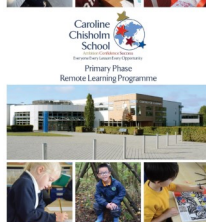
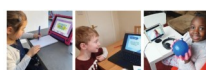
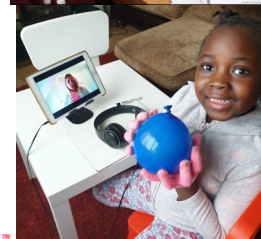
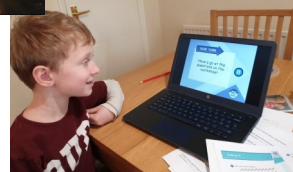
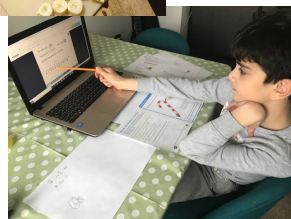
<https://www.ccs.northants.sch.uk/teams-video-tutorial>

Username: [primaryteams@ccs.school.uk](mailto:primaryteams@ccs.school.uk)  
Password: [teamsvideo](#)

You can also refer to our help guide which was sent out to all primary parents recently and can be found within the Primary Online Learning Programme document.



Great work at home everyone!



*"Just wanted to let you know how year 5 teams learning is going. I want to express my personal thanks for all the efforts yourself, IT, admin and class teachers have made in getting this set up and organised. I know it was a massive operation and probably not how everyone wants to teach, but the difference it has made to my child's learning in 1 day is immense, he is totally engaged and enjoying learning again."*

Parent

## Changing Circumstances



In these very difficult times, we are aware that financial circumstances have changed for lots of families. If this applies to your family, there is help available that you may qualify for. We would encourage you to visit the GOV.UK website to check if your changing circumstances mean that you are now entitled to one or more government benefits.

If you are in receipt of one of the following benefits, you may also be entitled to apply for pupil premium funding for your child:

- **Income Support**
- **Income Based Job Seekers Allowance**
- **Child Tax Credit Only (with income up to £16,190) with no element of Working Tax Credit**
- **National Asylum Seekers Support**
- **Guarantee Element of the State Pension Credit**
- **Employment and Support Allowance (income related)**
- **Universal Credit (income dependent)**

Pupil premium funding is additional school funding for disadvantaged children. It is paid directly to school to improve the quality of education for that pupil. This funding could be used to pay for free school meals, items of school uniform, school trips, additional learning support and other things.

To find out more information and to apply for this funding for your child, please visit the [pupil premium information page](#) on the Northamptonshire County Council website.

## In School - PE Days



For the critical worker / vulnerable children who are attending school, here is a reminder of the new PE days for each year group:

<b>Foundation Stage</b>	Monday, Wednesday, Thursday
<b>Year 1</b>	Monday, Tuesday
<b>Year 2</b>	Monday, Wednesday, Thursday
<b>Year 3</b>	Tuesday, Wednesday, Thursday
<b>Year 4</b>	Tuesday, Wednesday
<b>Year 5</b>	Tuesday, Wednesday
<b>Year 6</b>	Tuesday, Wednesday, Thursday

Children should come to school wearing their full PE kit, including appropriate footwear, on these days.

## Communication from School

More and more, in these current times, schools are needing to communicate quickly with parents. The best way for us to do this is via email.

Emails are often diverted to a junk mail folder. To ensure this doesn't happen and you don't miss a vital email from your child's school, we would advise adding both [SC9284005a@schoolcomms.com](mailto:SC9284005a@schoolcomms.com) and [primaryoffice@ccs.northants.sch.uk](mailto:primaryoffice@ccs.northants.sch.uk) to your stored contacts. This will ensure that information from us goes directly to your inbox.

Please also ensure that the email addresses we hold for you are up-to-date. If you are not sure or would like to check, you can contact the Primary Office by telephone on 01604 669210 or by email on [primaryoffice@ccs.northants.sch.uk](mailto:primaryoffice@ccs.northants.sch.uk).

## School Apps

There are a couple of apps available that you may not know about, to aid communication with school:

### School Gateway App

This app can be used to send messages about absences directly to school. It can also be used if school needs to send a text message to parents and means that school won't be charged for that message, so saves the school money.

### Insight (by TASC) App

This app can be used in the same way as logging onto Insight using an internet browser. You can see attendance details, personal details or read your child's reports here.

These can both be downloaded from your normal app store.