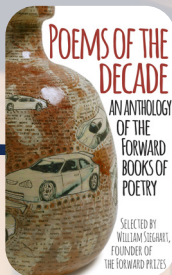


Year
12

English Literature - A Level



Poems of the
Decade



The Handmaid's Tale
by Margaret Atwood

CREATING

Intellectual playfulness
in understanding humor
of different eras.

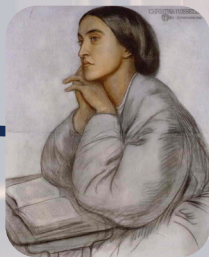


Frankenstein by
Mary Shelley

META-THINKING



Metathinking and self-
regulating own study of
key texts.



Rossetti
Poetry



Theatre trip

The NEA
component is worth
20% of the A Level

An introduction to **Comparative Coursework** - Students will perform a critical
study (2,500 words) of two texts.



HARD WORKING

Students will use their
independence in choosing
areas of study and
meeting deadlines for their
coursework.



An introduction to Othello

Caroline
Chisholm
School

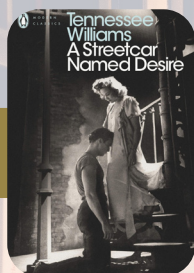
Ambition Confidence Success
Everyone Every Lesson Every Opportunity



English Literature - A Level

Year
13

A Streetcar Named Desire



META-THINKING



Intellectual confidence
with challenging themes,
advanced terminology and
critical perspectives.

Theatre trip

**Further work on
Othello**



Non-examination assessment
Students will continue to work on
their Comparative Coursework



**Revision for end of
year exams**

A Level exams

At the end of Year 13, students will sit 3 exams:

Paper 1 - Drama
30% of A Level
2h15m

Paper 2 - Prose
20% of A Level
1h15m

Paper 2 - Poetry
30% of A Level
2h15m

**Caroline
Chisholm
School**



Ambition Confidence Success
Everyone Every Lesson Every Opportunity