



Sixth Form Guide 2024/25



Welcome

I am immensely proud to welcome you to our oversubscribed and academically successful school.

We are a World Class High Performance Learning (HPL) accredited school which strives to develop young people into ambitious, high achieving, happy and resilient young adults. We make learning enjoyable from our Early Years' Foundation Stage right up to Key Stage 5. We provide a challenging academic curriculum, a supportive pastoral system and an outstanding extra-curricular programme which work together to grow and nurture the strengths and talents of all students.

This guide provides potential Sixth Form students and their parents with information about our Sixth Form provision. Applications are welcome from all Year 11 students, whether they are already at Caroline Chisholm School or currently attending other secondary schools.

We strive for excellence in all areas of learning and hold high expectations for our students, promoting an ethos of hard work, perseverance, and ambition, so anything is attainable. We recognise the wider importance to society of developing students who are good citizens and capable of achieving academically while being adaptable in an ever changing and competitive world.

Please do not hesitate to ask for additional information from any member of the Sixth Form team or our teaching staff.

Regards,

A handwritten signature in dark ink, appearing to read 'David James', with a long horizontal stroke extending to the right.

David James

Principal

Sixth Form ethos

We expect our Sixth Form students to be **high performing role models**, effective independent learners, and enthusiastic members of our school community.

We aim to encourage all students to develop a genuine interest and be fully engaged in their chosen subjects and provide the freedom for students to express themselves as young adults. We will support students to bridge the gap between school and university or employment, by developing independent study skills within a supportive and caring school environment.

We recognise the need to enable our students to move on to the world beyond school with **ambition, confidence and determination**, so they have a wide range of opportunities open to them and are **successful** in making the most of these opportunities.



Developing Ambition

Our Sixth Form encourages students to be ambitious when considering their career progression. We enable students to obtain fantastic academic qualifications so they can access the best universities and careers in the world, while making sure they are happy and confident to make the most of the next steps in their education and training.

Russell Group universities represent 24 of the UK's top higher education institutions which aim to promote excellent teaching and research. They are generally found at the top of the UK rankings for high value courses and have global reputations for excellence. **see appendix for full list of Russell Group Universities*. We also provide support for those individuals who wish to pursue higher or degree apprenticeships and have access to organisations such as ASK apprenticeships and "My Great First Job".

A number of our 2023 Year 13 leavers cohort secured their place at one of the prestigious Russell Group universities, and we are pleased to share the details of these below:

2023 Provider	Course(s)			2023 Provider	Course(s)
Durham University	Anthropology			University of Sheffield	Aerospace Engineering
University of Liverpool	Architecture				Business Management and Economics
	Economics				Urban Studies and Planning
	Law			University of Warwick	Film Studies
	Physiotherapy				Mathematics
University of Manchester	Law				Mathematics and Statistics
	Social Anthropology and Philosophy				Psychology
University of Nottingham	Economics	Law	Midwifery		
	Philosophy and Theology				

“

Learning at CCS allows me to be engaged throughout every lesson, as the teachers are very helpful and dedicated to teach their students in the most efficient way possible.

Emilie, Year 13 student —”

A closer look at Sixth Form

Students who choose Caroline Chisholm School for their Sixth Form education benefit from academic excellence, delivered through exceptional teaching and learning. Our Sixth Form team and tutors support the academic and social progress of students and prepare them for life after school. All students are advised and guided through the relevant application process, whether for a university course or a higher degree apprenticeship.

Our students are expected to take on responsibilities not only towards their own education, but also within the wider community. Academic qualifications will open doors to future opportunities, but we are mindful that it is also our responsibility to equip students for the future, through informed decisions that will impact positively on their well-being, independence and longer-term success.

We will help them to build resilience and transferable life skills, which enable them to contribute purposefully to society. All of our students are expected to volunteer and participate in the **Enrichment Programme** and should aim to achieve the **100 hours Lions Award**.

Pastoral care is at the heart of our Sixth Form. We believe that developing a growth mindset approach promotes well-being. We have several services available to support learning, including the following:

- Dedicated form tutors – offering consistency and a regular point of contact
- Subject leaders – providing guidance and support in all areas of learning
- School counsellors – offering tailored, individual support when required
- Mentoring scheme – allowing students to mentor younger students, assisting in confidence and leadership skills
- Dedicated sixth form area – a large area solely for sixth form use allowing individual, silent study
- Sixth form café – a communal, social area allowing interaction in a relaxed area exclusively for sixth form use
- Individual lockers – secure charging point for personal devices
- Sixth Form Student Council - led by the head students, which play a central part in forming a successful partnership with teaching and administrative staff



“

I like the welcoming feeling you get from CCS, and the friendships I've made during my time at the school.

[Being at an all-through school] has meant that the friends I made from primary are still the same friends I have today. It has also given me time to make good teacher-student relationships, given the course of time I spent at the school.

Joel, Year 13 student

”

Our offer

Our curriculum is designed to ensure that students can move effectively into their chosen next phase of education or employment. Common combinations of subjects can be taken which maximise the opportunity for students to move onto their university, degree or apprenticeship of choice. Our students typically study three A level subjects – in exceptional cases, students will be able to study a fourth A level subject. There is also an opportunity for students to take Level 3 vocational courses, each equivalent to one A Level.

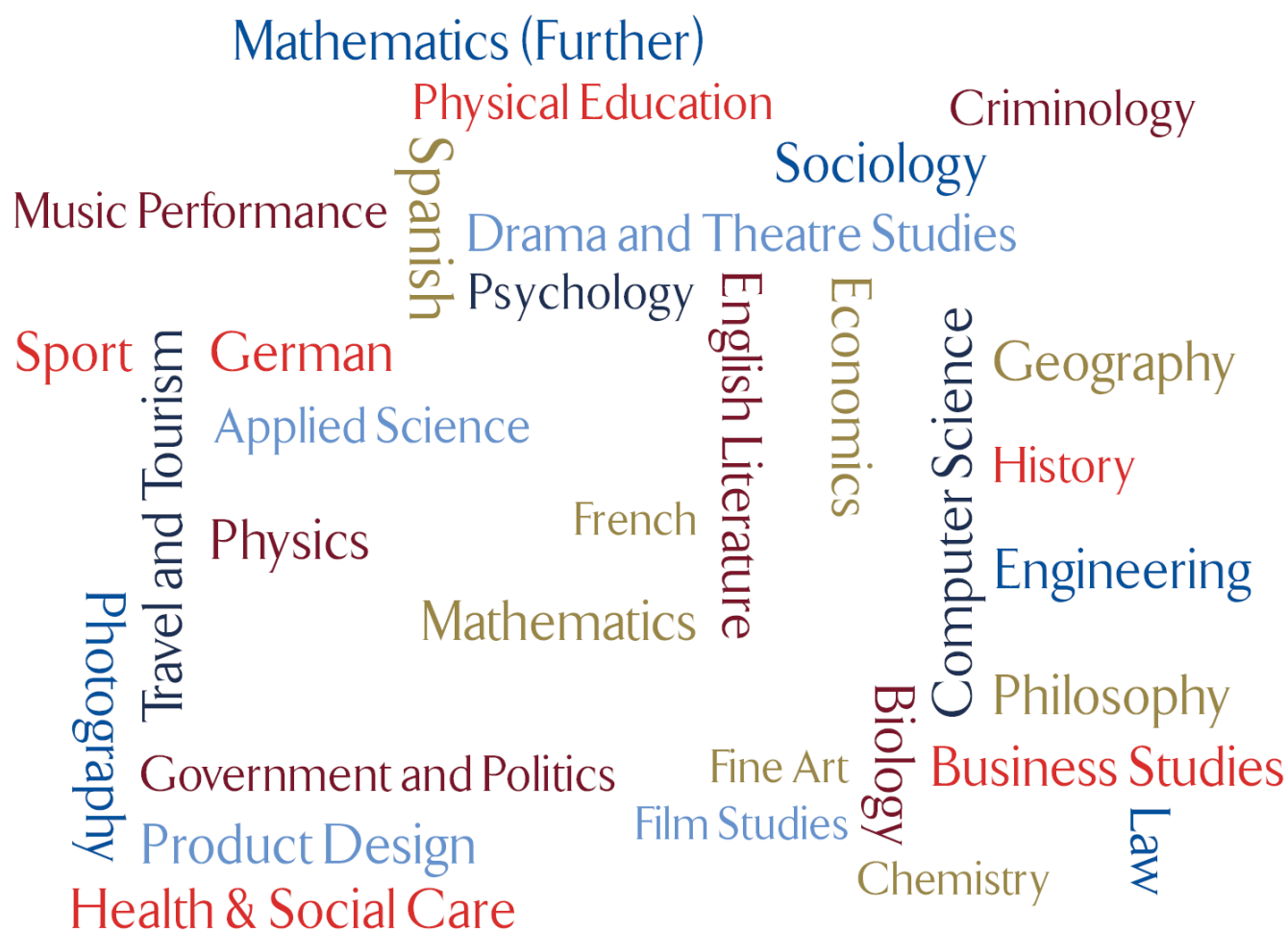
Students who meet the entry requirements will also be able to supplement their studies by undertaking an Extended Project Qualification (EPQ) during their time in Sixth Form, which contributes towards their final UCAS points. We advise students wishing to apply for top-level universities to consider “high value subjects” and common combinations of subjects – we arrange guidance meetings with our students to facilitate their choices.



Subjects on offer

Students at Caroline Chisholm School have access to a variety of courses including A levels and vocational studies. Students must choose **three** subjects, plus one reserve. Please note that all courses are dependent on number of applicants and viability of running them. For this reason, we ask students to also select a reserve subject. If there is a change to their chosen subjects, we will notify students and parents as soon as possible.

Our full list of courses is detailed below:



Applying for a place

All applications should be made via our applications portal, accessed by following the link below.

<https://ccs.applicaa.com/year12>

Applications will open from 12 January 2024 at 12pm. The deadline for applications is midnight on Friday 2 February 2024.

Any applications received after this time will be added to a waiting list and considered only if there are places available both in the Sixth Form and on the relevant course.

The published admission number (PAN) for external applications is 30 and spaces will be allocated in accordance with our admissions criteria.

Detailed admissions criteria and the subject course guide are available on the school website. Appeals information is also available on the school website.

All initial offers of places to internal and external students are conditional and are only confirmed on results day (22 August 2024), when the student shows evidence of achieving the required grades for their chosen subjects.

Availability of courses are dependent on number of applicants and viability of running them. For this reason, we ask students to also select a **reserve subject**. If there is a change to their chosen subjects, we will notify students and parents as soon as possible.

Entry Requirements

Students wishing to attend CCS Sixth Form must have achieved:

- A minimum GCSE grade 4 (or equivalent) in at least five subjects, including English Language, English Literature and Maths; and
- A minimum individual subject entry grade.

Individual subject entry grades are set out in the Sixth Form Course Guide, and these should be considered before finalising choices.

All applicants will be offered a guidance meeting to help with their choices.



Sixth Form life

Our students enjoy a mixture of timetabled lessons, independent study sessions, enrichment and voluntary work and also have time to relax should they require it.

Whilst we expect students to work hard, it is also important that they manage their time in order to mix with friends and enjoy the social benefits of life in this vital stage of their school journey. Students have a unique study centre, monitored by our Sixth Form Study Centre Manager. There are a number of 'break-out' areas available to them. Students are asked to bring their own laptops into school.



Teaching and Learning

We encourage students to be active learners, conduct their own research, organise their own time and take a leading role in lessons. Every student is part of a tutor group which meets daily. Tutors also meet with students on an individual basis to monitor progress, help them develop study skills and discuss any concerns.

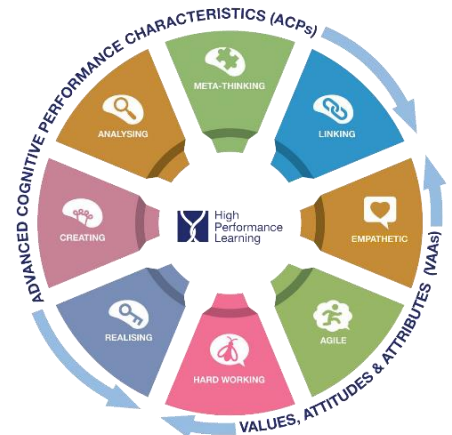
Our extensive range of educational trips enhance and bring to life students' learning experience outside the classroom. Trips to date have included: The British Film Institute, Dale Fort in Wales, Tate Modern and the V&A museum, Whipsnade Zoo, as well as performances of 'Come from Away', 'Jesus Christ, Superstar', 'School of Rock the Musical' and more! Internationally, students have enjoyed exploring the sights and culture of Paris, and we are excited to offer a trip to Rome for the first time this academic year.

High Performance Learning

At Caroline Chisholm School we adopt a High-Performance Learning (HPL) approach throughout the entire school experience – in lessons, extra-curricular activities, form time and in home study tasks. HPL is a research-based, pedagogy-led philosophy developed by Professor Deborah Eyre. This approach sees all students as high performers who are not limited by ability, and this reflects our own ethos of "everyone, every lesson, every opportunity".

HPL makes the ambition of high performance the expectation for all students in the school and uses a teaching and learning framework to systematically grow minds and develop the cognitive skills, values, attitudes and attributes needed to reach success. Our students are encouraged to use their thinking skills to build on existing knowledge, generate their own ideas and opinions and to solve problems effectively, both individually and in collaboration with their peers.

We have made connections with schools across the globe and have been accredited as a **World Class School**. A school where students gain the thinking skills and learning behaviours to equip them with the knowledge and independence to be global citizens, enterprising learners and advanced performers.



The Enrichment Programme

We are proud to offer diverse experiences which develop a range of transferable skills applicable to life beyond the Sixth Form:

- Participation in the Student Council
- Voluntary work through involvement in local community projects towards the YLIS award
- Supporting younger students in both primary and secondary phases
- Improving the school environment
- Undertaking the NCS Award
- Undertaking the Sports Leaders Level 2 Award
- PSHE programme delivered through tutor sessions and from visiting speakers
- Visits, including university open days and career fairs
- Educational trips



Induction

Induction into the Sixth Form for prospective students will likely take place in late June/ early July, shortly after following the completion of students' GCSE examinations. Induction is an opportunity for our new students to experience sample lessons and try out a range of A level subjects that will be studied when they start in September.

Our induction programme allows external students to gain an insight into life at our school and familiarise themselves with the school environment before they start.



Dress Code

We expect students to dress appropriately for the modern workplace and follow the published Sixth Form dress code. The Sixth Form team and tutors will intervene where dress falls below our expectations. There are some items which we consider inappropriate for school context, including:

- Blue/ grey/ very faded denim
- Excessively revealing clothes (open neck/ backed, short, cropped, see-through material)
- Ripped/ split and camouflage items
- Excessively high shoes
- Flip flops, sliders and Crocs
- Visible facial piercings
- Track bottoms, sports branded clothes and gym attire (including leggings)
- Hoodies
- Visible tattoos
- Items with offensive/ provocative slogans/ adult-themed images/ logos

“

In the Sixth Form, [...] the advice and guidance provided to support students' next steps are effective. Leaders provide many opportunities to develop students' character.

Ofsted, 2020

”

16-19 Bursary

The **16-19 Bursary Fund** helps students continue in education where they may otherwise struggle for financial reasons. We target funds allocated by the Educational Funding Agency to support these students. Completion and submission of the school's 16-19 Bursary Application Form, available via the school website, will be required.



Facilities

Our school has state-of-the-art classrooms, laboratories and specialist-teaching facilities, including dedicated dance, drama and music, science and technology and visual arts rooms. Our students benefit from their own, silent study area, break-out rooms for small group work and a café area, which provides hot snacks, drinks and other refreshments during the school day. Every Sixth Form student will also have access to their own individual small locker, which can store a portable device such as a laptop and/or mobile phone. The lockers are also equipped with an individual charging point for students to utilise for their device(s).

“

Pupils are well supported for their next steps in education and training.

Opportunities for extra-curricular activity are highly regarded. These include a wide range of sports, dance, drama and visual arts.

Ofsted, 2020

”

Appendix

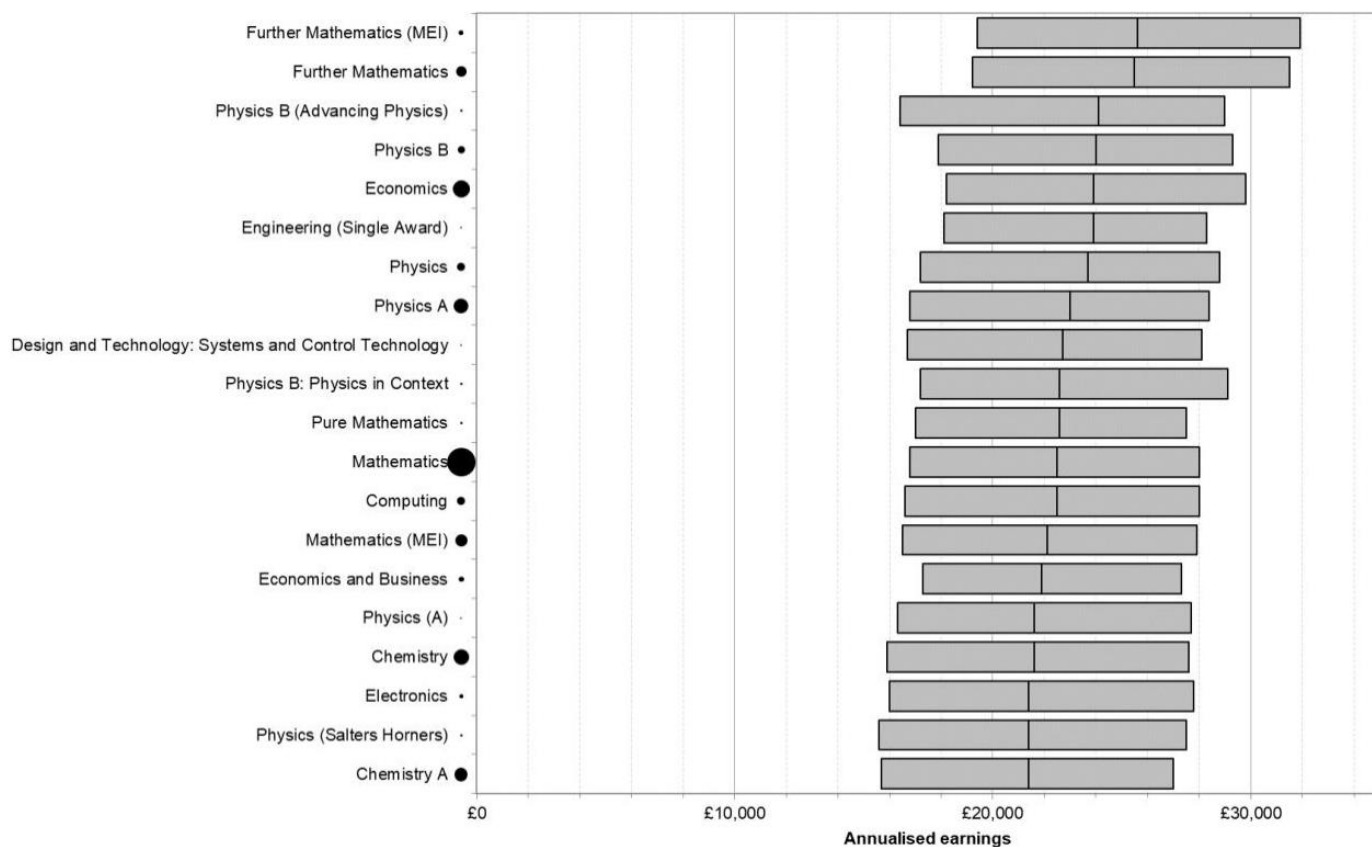
"Russell Group" universities represent 24 of the UK's top higher education institutions which aim to promote excellent teaching and research.

They are generally found at the top of the UK rankings for high value courses and have global reputations for excellence.

Russell Group Universities in alphabetical order:
University of Birmingham
University of Bristol
University of Cambridge
Cardiff University
Durham University
University of Edinburgh
University of Exeter
University of Glasgow
Imperial College London
King's College London
University of Leeds
University of Liverpool
London School of Economics & Political Science
University of Manchester
Newcastle University
University of Nottingham
University of Oxford
Queen Mary, University of London
Queen's University Belfast
University of Sheffield
University of Southampton
University College London
University of Warwick
University of York

Choosing your subjects

"High Value Courses" are subjects identified by the government as A levels which lead to higher earnings within 6 years (*top 2 qualifications using data from Gov.uk Post-16 education: earnings outcomes*).





The Wooldale Centre for Learning, Wootton Fields,
Northampton, NN4 6TP

01604 344744 | www.ccs.northants.sch.uk

Principal: Mr David James

Find us on our socials for latest updates:

 [@CarolineChisholmSchool](https://www.facebook.com/CarolineChisholmSchool) 